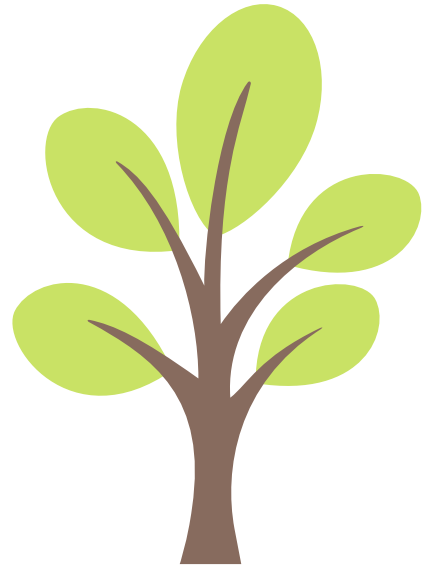
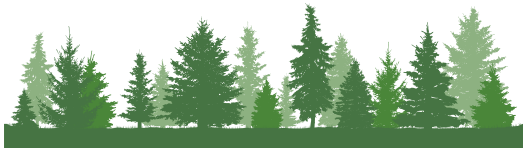


Mù  
木



Shù  
树



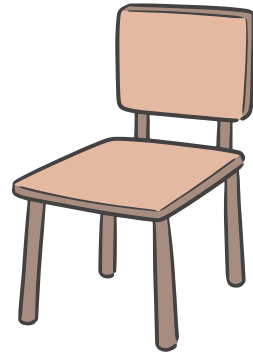
Sēn Lín  
森林



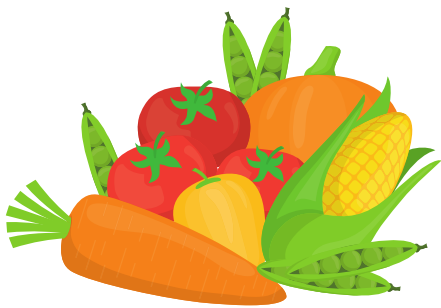
Zhuō  
桌



Shuǐ Guǒ  
水果



Yǐ  
椅



Cài  
菜



Mǐ  
米



Shuǐ  
水



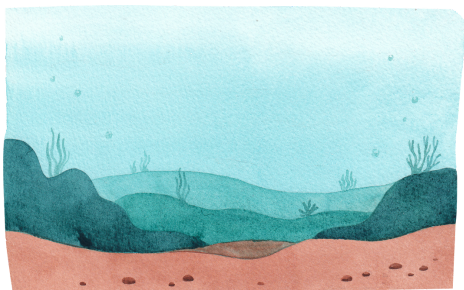
Kǒu Shuǐ  
口水



Hé  
河



Xǐ  
洗



Hǎi  
海



Wū  
污



Bīng  
冰



Xiāng Shuǐ  
香水